

Dilution at Hand™ Dispensing System

Dilution at Hand dispensers offer the convenience of filling spray bottles with one hand and the option of filling a bucket or scrubber with on/off control at the end of hose where operator is filling. These unique features, along with the traditional lever controlled actuation, make Dilution at Hand a truly revolutionary dispenser.

FILL SPRAY BOTTLES WITH ONE HAND: DEMA's Dilution at Hand valve design incorporates many of the positive features used with the successful 633 valve but turns the valve around 180 degrees for a smooth upward movement when the spray bottle pushes lever.

REMOTE FILL AT DISPENSING POINT: Dilution at Hand's patented remote filling option uses a hand held gun operating as a pilot valve back to water valve for easy on/off control at the end of hose where operator is filling. There are no moving parts, just water being moved from the water valve to the gun and back. Now, instead of moving your bucket or scrubber to the dispenser, take the dispenser to your point of use using the remote fill option.

Dilution at Hand offers both 1 and 4 gallon per minute proportioners, Action Gap backflow or Air Gaps, and Dial-A-Blend capability. A dispenser can be built to meet any desired application.

Single Station Options

Note: All models listed are shipped with DEMA's ASSE 1055B approved Action Gap backflow preventer. Replace the letters GAP with AG to include an Air Gap proportioner instead of Action Gap.



ONE HAND FILL



702GAP-RF



709GAP



701GAP

1 GPM Bottle Fill (4 liters/minute)

MODEL No.	ACTIVATION METHOD	NUMBER OF CHEMICAL PRODUCTS
701GAP	Bottle or Button Activated	One Chemical
703GAP	Bottle or Button Activated	Four Chemical Dial-A-Blend
705GAP	Bottle or Button Activated	One Chemical at Four Dilutions
707GAP	Bottle Activated Only	One Chemical
709GAP	Bottle Activated Only	Four Chemical Dial-A-Blend

4 GPM Bucket Fill (16 liters/minute)

MODEL No.	ACTIVATION METHOD	NUMBER OF CHEMICAL PRODUCTS
702GAP	Button Activated	One Chemical
702GAP-RF	Remote Fill Activated	One Chemical
704GAP	Button Activated	Four Chemical Dial-A-Blend
704GAP-RF	Remote Fill Activated	Four Chemical Dial-A-Blend
706GAP	Button Activated	One Chemical at Four Dilutions
706GAP-RF	Remote Fill Activated	One chemical at Four Dilutions



REMOTE FILL

Dilution at Hand™ Dispensing System

Multi Station Units

Dilution at Hand Dispensers may be built to meet any dispensing requirement. DEMA has several factory built multi-station units set up or can build a special unit to meet your requirements. (Minimum order required for factory built special units)

Note: All models listed are shipped with DEMA's ASSE 1055B approved Action Gap backflow preventer. Replace the letters GAP with AG to include an Air Gap proportioner instead of Action Gap.

Multi Station Units With Single Product Proportioners

MODEL	LEFT STATION FLOW AND ACTIVATION	RIGHT STATION FLOW AND ACTIVATION
720GAP	Bottle or Button Activated 1 GPM (4 liters/minute)	Bottle or Button Activated 1 GPM (4 liters/minute)
721GAP	Bottle Activated 1 GPM (4 liters/minute)	Bottle Activated 1 GPM (4 liters/minute)
722GAP	Button Activated 4 GPM (16 liters/minute)	Bottle or Button Activated 1 GPM (4 liters/minute)
722GAP-RF	Remote Fill Activated 4 GPM (16 liters/minute)	Bottle or Button Activated 1 GPM (4 liters/minute)
724GAP	Button Activated 4 GPM (16 liters/minute)	Button Activated 4 GPM (16 liters/minute)
724GAP-RF	Remote Fill Activated 4 GPM (16 liters/minute)	Remote Fill Activated 4 GPM (16 liters/minute)

Multi Station Dispensers with Dial-A-Blend Proportioners

MODEL	LEFT STATION FLOW AND ACTIVATION	RIGHT STATION FLOW AND ACTIVATION
730GAP	Button Activated 4 GPM (16 liters/minute)	Bottle or Button Activated 1 GPM (4 liters/minute) 4 Product Dial-A-Blend
730GAP-RF	Remote Fill Activated 4 GPM (16 liters/minute)	Bottle or Button Activated 1 GPM (4 liters/minute) 4 Product Dial-A-Blend
731GAP	Button Activated 4 GPM (16 liters/minute) 4 Product Dial-A-Blend	Bottle or Button Activated 1 GPM (4 liters/minute) 4 Product Dial-A-Blend
731GAP-RF	Remote Fill Activated 4 GPM (16 liters/minute) 4 Product Dial-A-Blend	Bottle or Button Activated 1 GPM (4 liters/minute) 4 Product Dial-A-Blend



722GAP-RF



730GAP

Dilution at Hand Rack Options

Dilution at Hand Dispensers mounted to chemical storage racks. These dispensers offer a complete system keeping chemical containers off the ground in a safe manner and a drip tray mounted to the rack. Single and four station racks are available standard. Custom racks with various stations and sizes can be made if minimum lot sizes are met.

701GAP-RACK:

One gallon bottle rack with 701GAP dispenser attached.

702GAP-RACK:

One gallon bottle rack with 702GAP dispenser attached.

702GAP-RF-RACK:

One gallon bottle rack with 702GAP-RF dispenser attached.

730GAP-RACK:

Four gallon bottle rack with 730GAP dispenser attached.

730GAP-RF-RACK:

Four gallon bottle rack with 730GAP-RF dispenser attached.

731GAP-RACK:

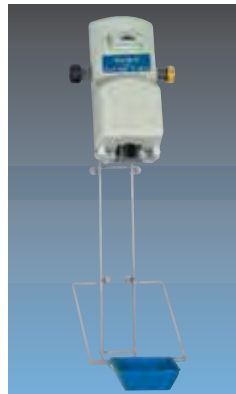
Four gallon bottle rack with 731GAP dispenser attached.

731GAP-RF-RACK:

Four gallon bottle rack with 731GAP-RF dispenser attached.

6.5" W X 20" H X 7" D on 701GAP-RACK

25" W X 20" H X 7.5" D on 731GAP-RF-RACK



701GAP-RACK



731GAP-RF-RACK

Blend Safe II Dispensing System

Blend Safe II is a modular, locking dispensing system that allows user to dispense chemicals safely, control dispenser inventory, and have the flexibility in the field to meet changing requirements at different accounts.

- Locking cabinets molded in durable Polypropylene
- Removable drip tray
- Units are held together with easy to use clips
- Locking cabinets can be mounted on a vertical or horizontal plane
- Cabinet accommodates various bottle sizes (up to 5 liters)

MODEL NUMBERS: All model numbers listed below include DEMA's Action Gap backflow preventer. Specify the letters AG instead of GAP if DEMA's Ultra Gap Air Gap proportioner is preferred.

Last suffix number designation:

- 1 is 1 gallon per minute flow (4 liters/minute)
- 4 is 4 gallon per minute flow (16 liters/minute)

1 Station

- 662-GAP-1 (1gpm)
- 662-GAP-4 (4gpm)

2 Station-one dual button cabinet

- 662-2GAPDB-11
- 662-2GAPDB-14
- 662-2GAPDB-44

2 Station-two single button cabinets

- 662-2GAP-11
- 662-2GAP-14
- 662-2GAP-44

3 Station

- 662-3GAP-1
- 662-3GAP-114
- 662-3GAP-144

4 Station-two dual button cabinets

- 662-4GAP-1111-2
- 662-4GAP-1114-2
- 662-4GAP-1144-2

4 Station-four single button cabinets

- 662-4GAP-1111-4
- 662-4GAP-1114-4
- 662-4GAP-1144-4

Dial-A-Blend

- 662-639GAP (4 products @ 1gpm, 1 product @ 4gpm)
- 662-637GAP-1 (4 products @ 1gpm)
- 662-637GAP-4 (4 products @ 4gpm)
- 662-635GAP-4 (1 product @ four dilutions 4gpm)



662-GAP-1



662-4GAP-1114-2



662-639GAP
(cabinets shown vertical)

Dispenser Only (No locking cabinets included in the part numbers below)

- 66-144GAP-1 One button top – 1gpm (4 liters/minute)
- 66-146GAP-1 One button top – 4gpm (16 liters/minute)
- 66-148GAP-1 Two button top – 1gpm/1gpm
- 66-148GAP-2 Two button top – 1gpm/4gpm
- 66-149GAP-2 1 product @ four dilutions 4gpm
- 66-150GAP-1 4 products @ 1gpm
- 66-150GAP-2 4 products @ 4gpm
- 66-151GAP 4 products @ 1gpm and 1 product @ 4gpm
- 66-151GAP-2 4 products @ 1gpm and 4 products @ 4gpm



66-148GAP-2



66-151GAP-2

Blend Centers and Blend Safe Dispensers

Blend Centers and Blend Safe dispensers use DEMA's modular 633 valve body to create the dispenser needed for any field installation. Choose from single button plastic units, multi station stainless steel units or the lockable 661 stainless steel series.

633 Series Plastic Blend Center's modular design lets you easily couple together any number of stations to create a system that meets your specific needs. Mix and match both high and low flow units for filling spray bottles, buckets, sinks, and other reservoirs. Choose from blue, red, green, yellow, black, or white buttons.

MODEL NUMBERS: All model numbers listed below include DEMA's Action Gap backflow preventer. Specify the letters AG instead of GAP if DEMA's Ultra Gap Air Gap proportioner is preferred.

Model 633GAP-1

Action Gap backflow with 1 gpm (4 liters/minute) proportioner

Model 633GAP-4

Action Gap backflow with 4 gpm (16 liters/minute) proportioner



3 MODEL 633GAP UNITS SHOWN COUPLED TOGETHER

633GAP-B1



681 Series Stainless Steel and Plastic Cover Blend Centers

Models listed below include 4 gpm (16 liters/minute) proportioners. All models can be ordered with any combination of 1 or 4 gpm (4 or 16 liters/minute) proportioners. Contact Customer Service for additional model numbers.

STATION	MODEL No.	COVER MATERIAL
1	681GAP-1	Stainless Steel
2	681GAP-2	Stainless Steel
2	681GAP-2P	Plastic
3	681GAP-3	Stainless Steel
3	681GAP-3P	Plastic
4	681GAP-4	Stainless Steel
5	681GAP-5	Stainless Steel



681GAP-2



681GAP-3P

661 Series Lockable Stainless Steel Dispensers

Offer safety and security when it is necessary for gallon bottles to be self contained inside the dispenser. Units are lightweight and have a mounting flange outside the dispenser for easy installation.

Model 661GAPB one station (1 gpm) with Action Gap backflow preventer

Model 661GAPDB one station with two buttons (1 gpm and 4 gpm) with Action Gap backflow preventer

Model 661GAP-4 four station with Action Gap backflow preventer (standard configuration is three 1 gpm proportioners and one 4 gpm proportioner)

Model 661GAPS-4 four station with Action Gap backflow preventer and stainless steel drip tray



661GAP-4



661GAPDB

Accessories and Spare Parts



44-3N-6

44-3N-6
Six feet (2 meters)
nylon braided hose
44-3-6
Six feet (2 meters)
black hose



66-43

66-43
Pressure regulator
(40 psi / 2.5 bar) with
GHT connections



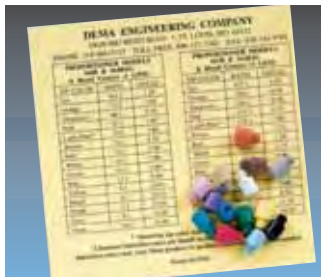
16-30 with 61-22-3

16-30
Action Gap backflow
preventer
61-22-3
Four gpm proportioner
61-99-2
One gpm proportioner



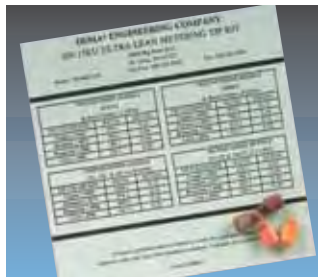
61-22-3BAG

61-22-3BAG
Four gpm air gap
proportioner
61-32BAG
One gpm air gap
proportioner



100-15K

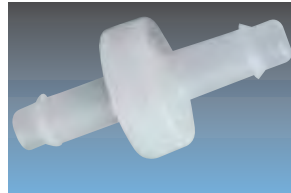
100-15K Tip kit
100-15KU Ultra lean tip kit
44-61P Capillary metering tip for lean dilutions



100-15KU



68-6



60-54

68-6
Pressure Indicating Tee
with Garden Hose Threads
*To meet various municipal plumbing
codes for backflow prevention*
68-6QD1

Pressure Indicating Tee
with Male Quick Disconnect
68-6QD2

Pressure Indicating Tee
with Male and Female Quick
Disconnect



100-16E

100-16E
1/4" and 3/8" Diaphragm foot
valve with EP seal

100-16S
1/4" and 3/8" Diaphragm foot
valve with silicone seal

100-16V
1/4" and 3/8" Diaphragm foot
valve with viton seal

60-54
1/4" in line check valve
100-12

Eight feet 1/4"
ID inlet tubing

61-21
Six feet 1/2" ID outlet tubing for
Action Gap backflow preventer
and proportioner

63-83
Six feet 9/16" ID outlet tubing
for Air Gap proportioner

Racks for Chemical Bottle Storage

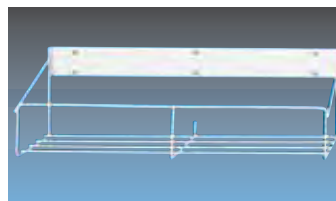
- 930-1R** One station non locking rack for round bottles
- 930-1F** One station non locking rack for F-style bottles
- 931-2** Two station locking rack
- 930** Three station non locking rack
- 931** Three station locking rack



930-1F 7 5/8"x4 3/8"



931-2 13 1/2"x6 1/2"



930 19 1/2"x7 7/16"



931 19 1/2"x6 1/2"